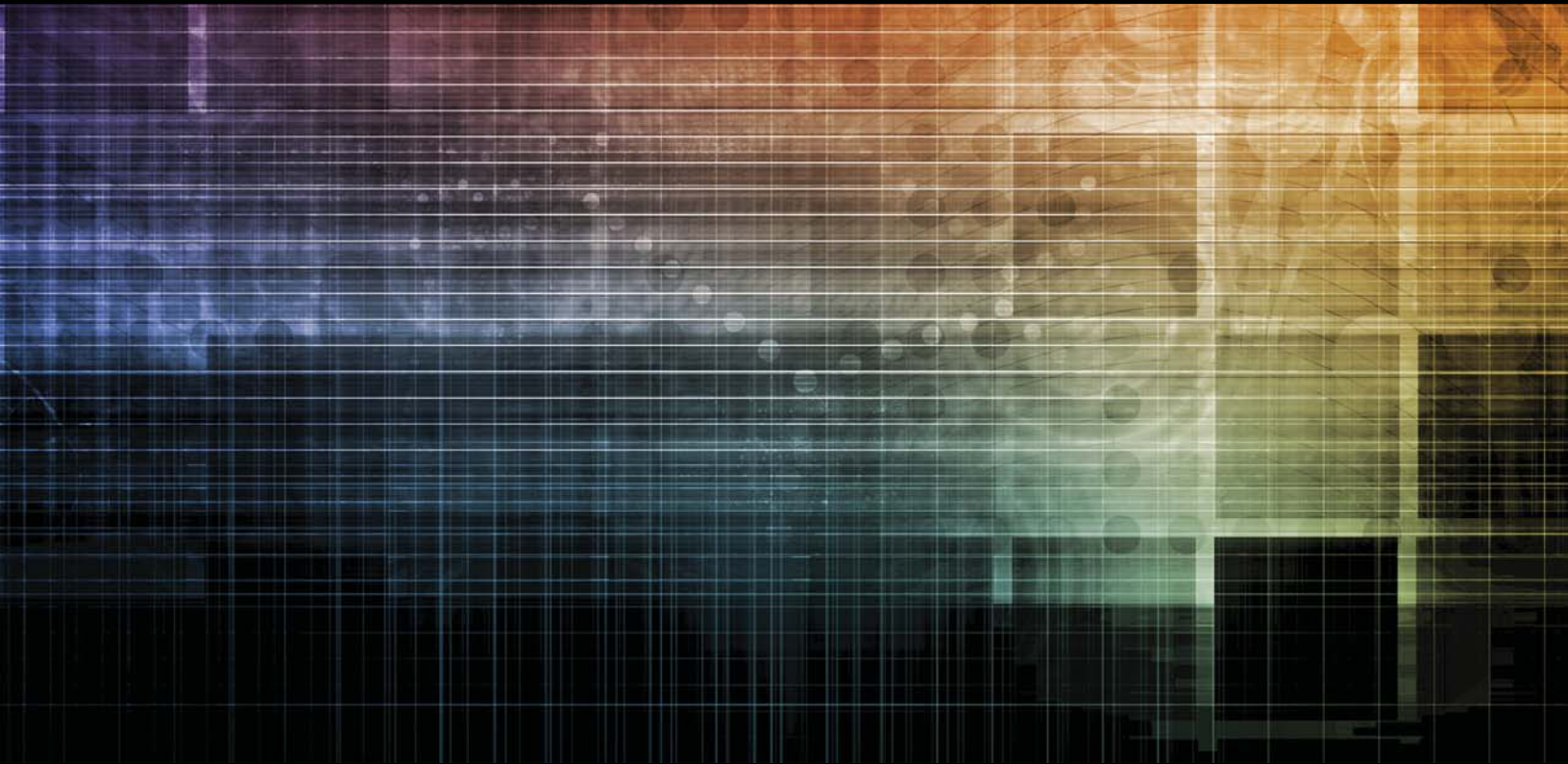




**gmi**  
SOLUTIONS

DESIGN & MANUFACTURING SERVICES

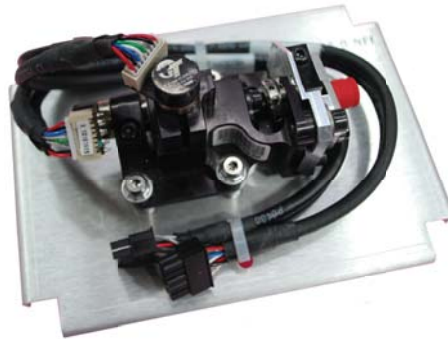




## SOLVING PROBLEMS AND CREATING VALUE GLOBALLY

GMI Solutions is a global, vertically integrated outsource manufacturing partner that provides complementary design services to OEMs. We offer a broad range of manufacturing capabilities including electromechanical assembly and test, complete product fulfillment, and ongoing production support services.

We have been supplying OEMs with outsourcing services for over 30 years. With ISO-certified facilities in North America and Asia, we are equipped to service locations anywhere in the world. Our in-house expertise in the design and manufacturing of electromechanical assemblies, computing solutions, and electronic circuit boards ensures extremely reliable products with very controlled lifecycles. GMI Solutions has long been a trusted partner of small, mid-tier and global tier-one OEMs.





**Mechanical Design** If you need adjustments to existing electromechanical assemblies or a complete solution designed from the ground up, we can help. We have extensive experience in all levels of mechanical assemblies and offer complementary in-house design skills to validate fitment and operation before prototypes are assembled.



**Electronic Design** GMI Solutions' team of electrical engineers is available to assist with a full range of solutions to help get your application to market faster. We are your best source for circuit board design to enhance products, increase reliability and reduce total cost of ownership. As experts in all types of I/O, our designs help ensure that your entire product integrates smoothly and remains reliable for many years.



**Embedded Computing** GMI Solutions offers OEMs a complete outsourcing option for embedded computing solutions. We have been working with embedded platforms since the early 80s and fully understand the challenges of managing the quality and consistency levels required by OEMs. Internal design capabilities include peripherals, interfaces, expansion cards, and completely custom systems.



**Contract Manufacturing** From subassemblies to complete turnkey products GMI Solutions has the manufacturing capabilities to meet your needs in our top-notch, ISO 9001/13485 controlled environment that includes a Class 10,000 clean room for sensitive assemblies. From a few to a few thousand, we can assemble products in North America, China, or both.



**Global Footprint** With wholly-owned facilities in North America and Asia, we are able to provide OEMs with a seamless program migration because workflow and program management processes are identical at both facilities. Your products can be engineered and manufactured in either region using the same instruction sets, testing, packaging and revision control. Since our facility in China is wholly-owned, your proprietary software and hardware are safe with us. We have gone to great lengths to ensure security for the largest to the smallest OEM's in the world when transitioning production overseas.



**Quality** As part of our commitment to safety and durability, all products are designed and manufactured to accommodate safety requirements as specified. Testing is performed to ensure that the products comply with relevant global directives. GMI Solutions has extensive expertise in managing safety, emissions, susceptibility and other regulatory certifications which can be leveraged for your products.





*Solving Problems and Creating Value Globally*



Global Headquarters  
GMI Solutions America:  
Mequon, WI 53092 USA  
Phone: (262) 242.8800  
Email: sales@gmisolutions.com

GMI Solutions Asia:  
Shanghai, P.R. China 201206  
Phone: (86) 21.50311999  
Email: sales.CN@gmisolutions.com

[www.GMISolutions.com](http://www.GMISolutions.com)

